

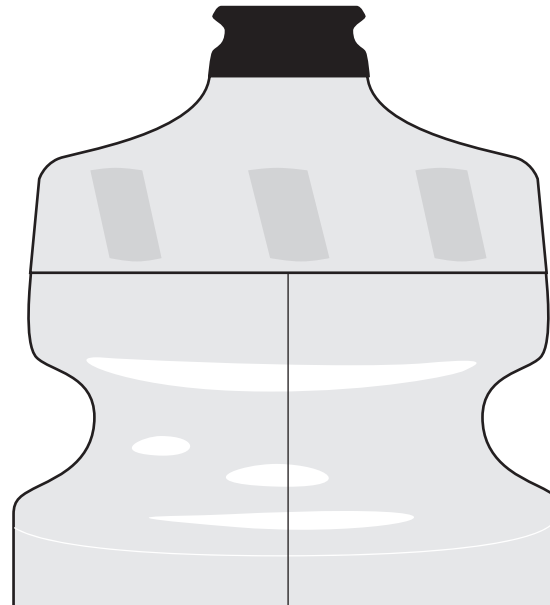
22 oz. **purist**

Designer's Template

ART FORMATS & REQUIREMENTS:

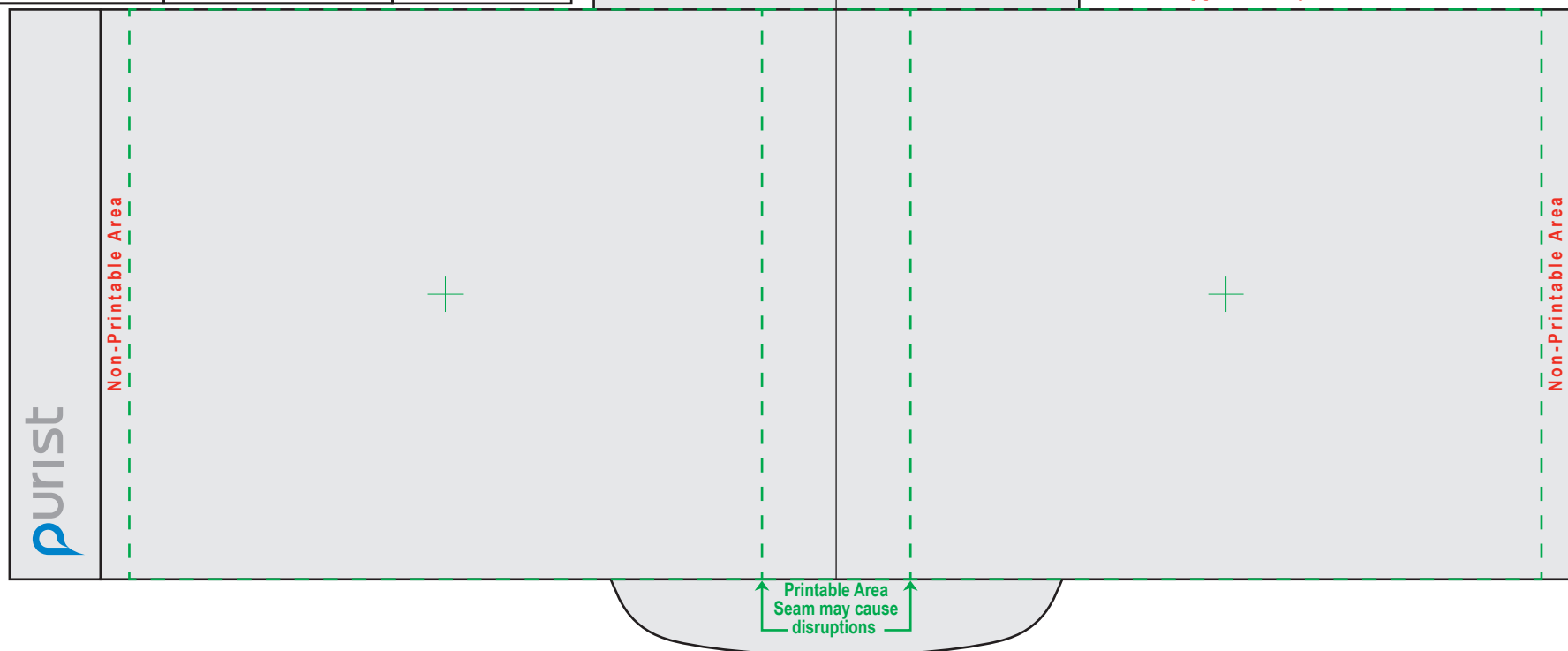
- Adobe Illustrator (.ai) for vector graphics (logos)
- Adobe Photoshop (.psd, .jpg) for raster graphics (photos)
 - All fonts need to be changed to outlines
 - Raster graphics need to be high-resolution (300dpi preferred)
 - Outlined stroke weight needs to be thickened for trapping (2pt minimum)

Bottle Color(s):	Cap Color(s):	Cap Type(s):
XXXX	XXXX	XXXX



Entire body dimensions (for wrapping art):
approx. 8 1/4" width x 3 3/8" length

Individual left and right side dimensions:
approx. 3 11/16" width



04/17/15